

File Name:	Parameter Editor	Version	1.1
Project:	IStartek Protocol	Update Date:	2012-5-28
Sub Project:	User Manual	Page:	1 of 10

---

# **iStartek Parameter Editor**

## **Version V1.1**

### **Content**

File Name:	Parameter Editor	Version	1.1
Project:	IStartek Protocol	Update Date:	2012-5-28
Sub Project:	User Manual	Page:	2 of 10

---

1. Introduction .....	2
2. Hardware and Software Requirement.....	2
3. Installation and Connection.....	3
4. Configuration .....	4
Tab I: Operation .....	6
Tab II: GPRS.....	6
1.1 Tab III: SMS/Calling .....	7
1.2 Tab IV: Main Setting.....	8
1.3 Tab V: GEO Fence.....	10

## 1. Introduction

iStartek Paramter Editor is used to configure iStartek VT600

## 2. Hardware and Software Requirement

- A personal computer or laptop with Windows 2000, XP, Windows Vista, or Windows 7;

File Name:	Parameter Editor	Version	1.1
Project:	IStartek Protocol	Update Date:	2012-5-28
Sub Project:	User Manual	Page:	3 of 10

- Desktop
- A RS232 USB data cable
- RS232 Driver (PL2303\_Prolific\_DriverInstaller)
- Parameter Editor

### 3. Installation and Connection

#### 3.1 Install RS232 driver (PL2303\_Prolific\_DriverInstaller)

Note: You can find RS232 in the CD in package.

#### 3.2 Connect RS232 USB data cable to computer USB port



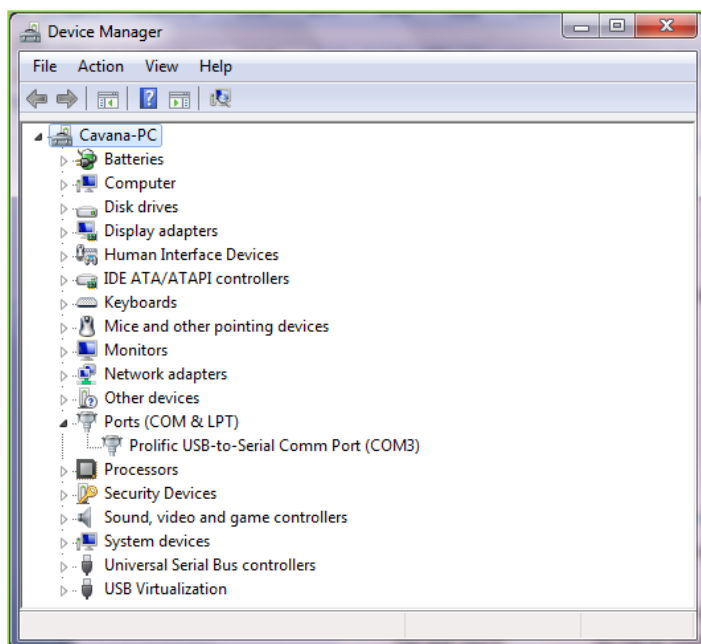
#### 3.3 Connect VT600 to data cable



Note: make sure VT600 no connection with external power and under power off status before enter configuration mode.

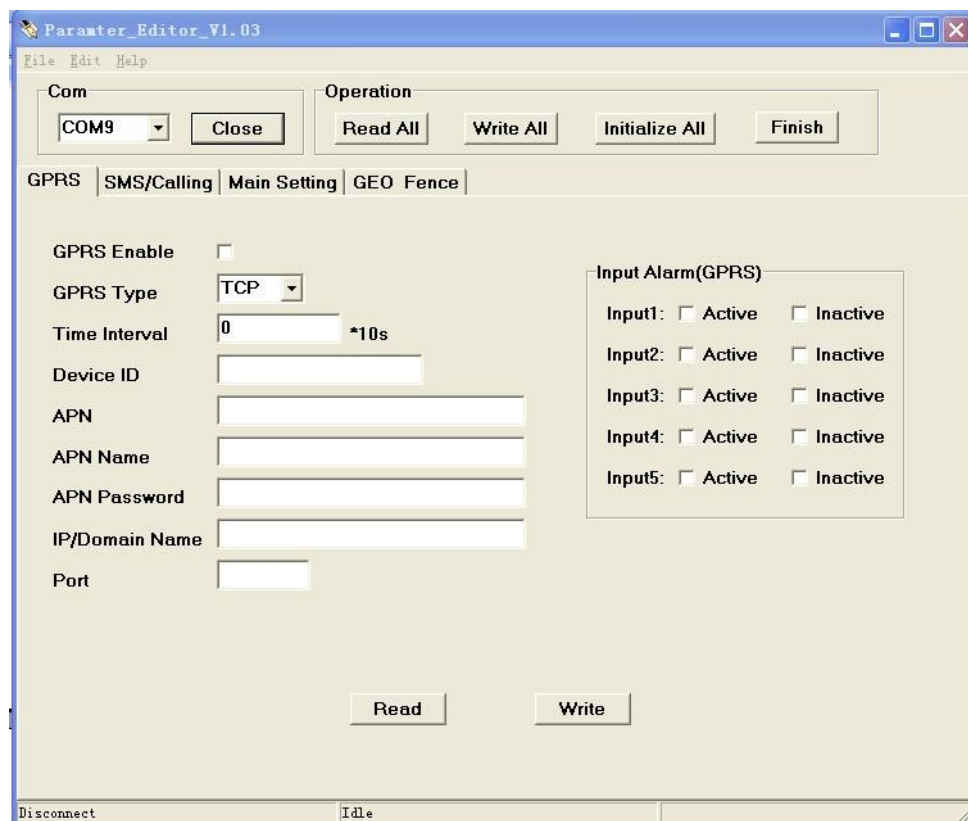
#### 3.4 Check RS232 COM Port in Device Manager.

File Name:	Parameter Editor	Version	1.1
Project:	IStartek Protocol	Update Date:	2012-5-28
Sub Project:	User Manual	Page:	4 of 10



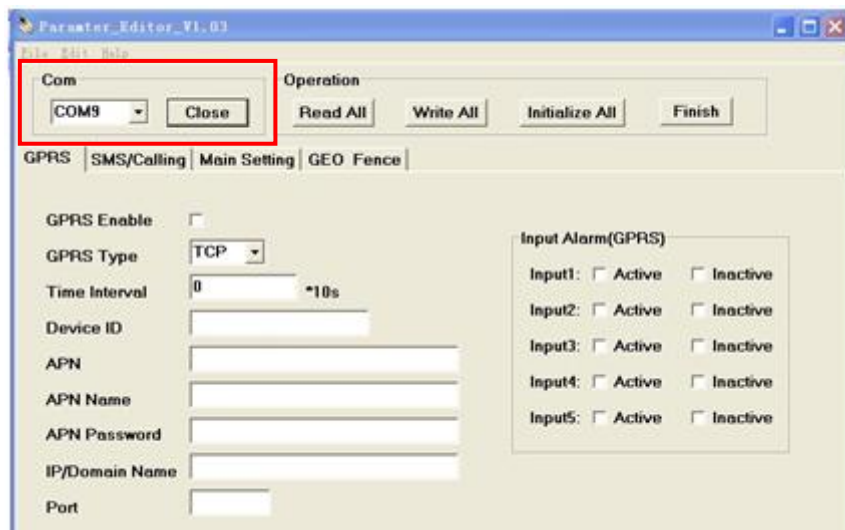
## 4. Configuration

4.1. Run Parameter Editor, it will open following window:

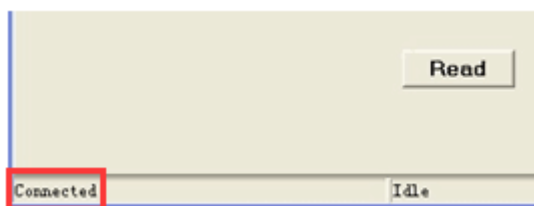


4.2 Choose the correct COM number according to the Device Manager shows, the click "Open".

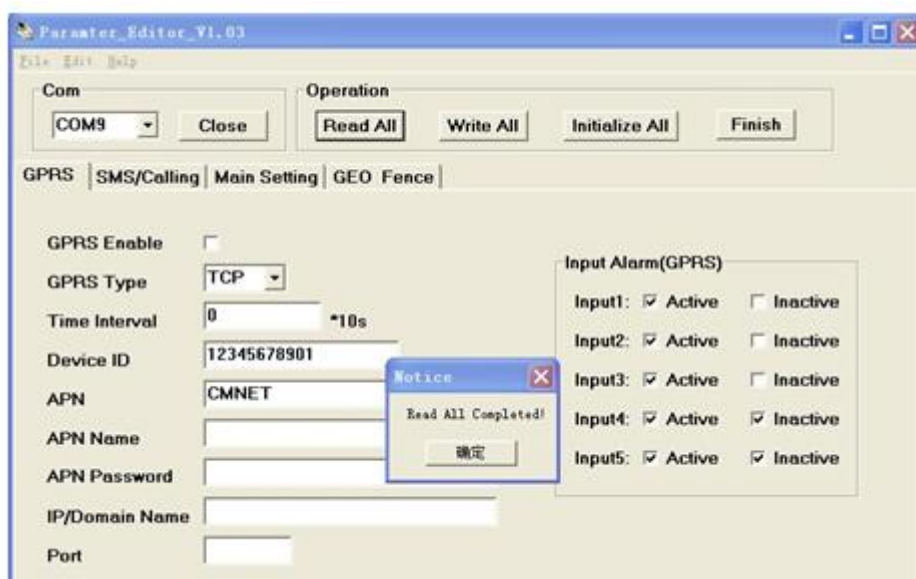
File Name:	Parameter Editor	Version	1.1
Project:	IStartek Protocol	Update Date:	2012-5-28
Sub Project:	User Manual	Page:	5 of 10



4.3. Switch on VT600 (press VT600 ON/OFF button 1sec), all LED is ON, Parameter Editor shows "Connection, now the tracker is ready for configuration."



4.4 Click "Read All"



**Tab I: Operation**

**Operation**

Read All
Write All
Initialize All
Finish

Item	Description
<b>Read All</b>	Read all data from Tracker
<b>Write All</b>	Write all data to Tracker
<b>Initialize All</b>	Initialize tracker to default set
<b>Finish</b>	Finish Configuration and log out Parameter Editor

**Tab II: GPRS**

GPRS
SMS/Calling
Main Setting
GEO Fence

GPRS Enable ☐

GPRS Type TCP

Time Interval 0 \*10s

Device ID 1234567892

APN CMNET

APN Name

APN Password

IP/Domain Name 156.78.63.199

Port 8500

**Input Alarm(GPRS)**

Input1: ☒ Active ☐ Inactive

Input2: ☒ Active ☐ Inactive

Input3: ☒ Active ☐ Inactive

Input4: ☒ Active ☒ Inactive

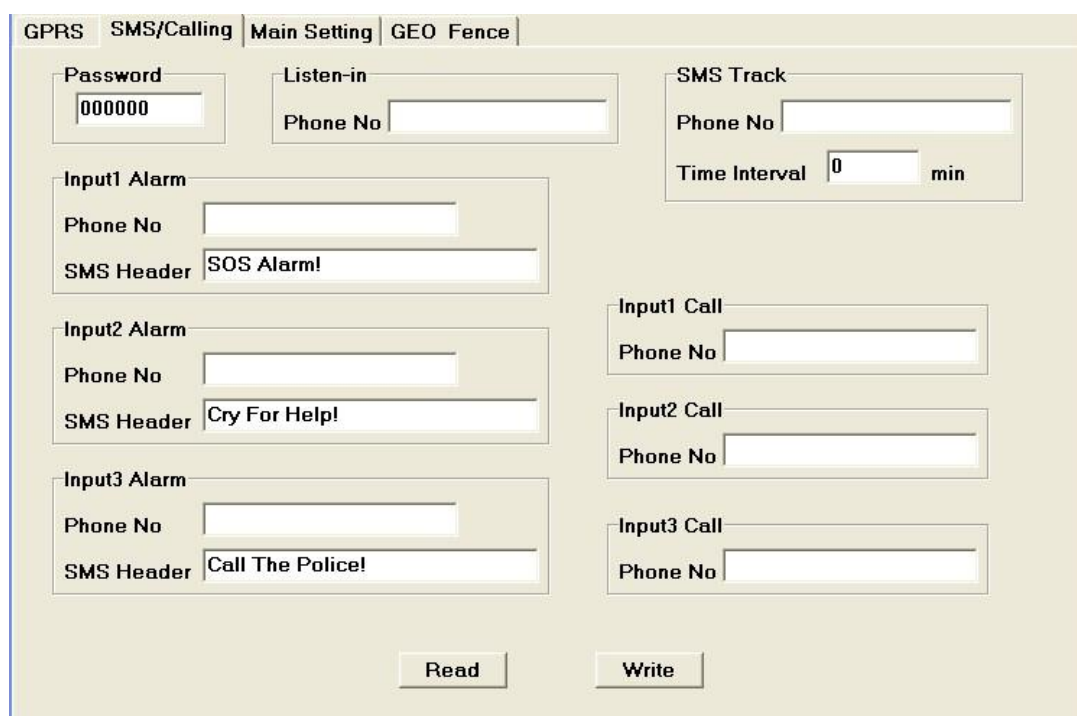
Input5: ☒ Active ☒ Inactive

Read
Write

Item	Description
<b>GPRSEnable</b>	Enable GPRS function
<b>GPRS Type</b>	Choose GPRS data transmission type: TCP or UDP
<b>Time Interval</b>	Set GPRS data time interval Unit = 10sec, eg.: 3 means 3*10sec=30sec = 0, stop tracking by time interval. Max time interval= 65535*10sec
<b>Device ID</b>	Tracker's GPRS ID, please use S/N
<b>APN</b>	Max 32bytes
<b>APN Name</b>	Max 32 bytes. If no username required, leave it blank.
<b>APN Password</b>	Max 32 bytes. If no password required, leave it blank.

<b>IP/Domain Name</b>	Set server IP or domain, Max 32 bytes
<b>Port</b>	Set Server port
<b>Input Alarm(GPRS)</b>	Set input active/inactive alarm ( only for GPRS alarm )
<b>Read</b>	Read tracker's current setting
<b>Write</b>	Write configuration into tracker

## 1.1 Tab III: SMS/Calling



Item	Description
<b>Password</b>	SMS Password for sending SMS command, default password is 000000
<b>Listen-in</b>	Set a phone number for calling tracker, it will auto answer the incoming call for voice monitoring
<b>SMS Track</b>	Set Phone Number and Time Interval for SMS track "Time Interval" = 0, Stop sending SMS location (default set) = [1,255], track by interval in minute
<b>Input1 Alarm</b>	Alarm once Input1 active "Phone No.": Set the phone number to receive SMS alarm "SMS Header": Set SMS header of each event to be shown in the beginning in the SMS
<b>Input2 Alarm</b>	Alarm once Input1 active "Phone No.": Set the phone number to receive SMS alarm "SMS Header": Set SMS header of each event to be shown in the

	beginning in the SMS
<b>Input3 Alarm</b>	Alarm once Input1 active "Phone No.": Set the phone number to receive SMS alarm "SMS Header": Set SMS header of each event to be shown in the beginning in the SMS
<b>Input1 Call</b>	Press Input 1 to call "Phone No.": Authorize phone numbe for receiving phone call
<b>Input2 Call</b>	Press Input 2 to call "Phone No.": Authorize phone numbe for receiving phone call
<b>Input3 Call</b>	Press Input 3 to call "Phone No.": Authorize phone numbe for receiving phone call
<b>Read</b>	Read tracker's current setting
<b>Write</b>	Write configuration into tracker

## 1.2 Tab IV: Main Setting

GPRS	SMS/Calling	Main Setting	GEO Fence
<div> <div> SMS Time Zone: <input type="text" value="0"/> Minute  Log Interval: <input type="text" value="0"/> s  Heading Change: <input type="text" value="0"/> Degree  Speeding Alarm: <input type="text" value="0"/> *10Km/h  Distance Interval: <input type="text" value="0"/> m  Heartbeat Interval: <input type="text" value="0"/> Minute  GPS Sleep Mode: <input type="text" value="0"/>  Power Saving Mode: <input type="text" value="0"/> Minute  Low Battery Alarm: <input type="text" value="3.5V"/> </div> <div> <b>Other Functions</b>  <input checked="" type="checkbox"/> Call for SMS  <input type="checkbox"/> Google Link Mode  <input type="checkbox"/> Reject Incoming Call  <input type="checkbox"/> Device Reboot Alarm  <input type="checkbox"/> GPS Blind Alarm  <input type="checkbox"/> LED Off  <input type="checkbox"/> External Power Cut Alarm </div> </div> <div> <input type="button" value="Read"/> <input type="button" value="Write"/> </div>			

Item	Description
<b>SMS Time Zone</b>	Default time of the tracker is GMT. You can use this comment to correct it to your local time for SMS report. = 0, GMT (default); = 0, GMT (default set) = [-720,720], set time difference in minutes to GMT. Eg., China is 480



File Name:	Parameter Editor	Version	1.1
Project:	IStartek Protocol	Update Date:	2012-5-28
Sub Project:	User Manual	Page:	9 of 10

<b>Log Interval</b>	Set the interval for storing GPS data into tracker's flash memory. = 0, turn off logging; = [1,65535], set logging interval in second.
<b>Heading Change</b>	When the heading direction of the tracker changes over the preset degree, a message with location data will be sent back to the server by GPRS. = 0, cancel heading change report (default); = [1,359], set degree of direction change.
<b>Speeding Alarm</b>	= 0, cancel speeding alarm (default) = [1,20], set speed limit in 10Km/h
<b>Distance Interval</b>	Set distance interval for SMS/GPRS tracking. = 0, stop tracking by distance interval (default); = [1, 4294967295], set interval in meter
<b>Heartbeat Interval</b>	= 0, cancel heartbeat report (default); = [1,255], set interval in minute.
<b>GPS Sleep Mode</b>	Set sleep mode for tracker's GPS module  0 = to turn of SLEEP MODE  1 = Level 1 GPS Module work 3mins and close 1min, it will periodically work and close.  2 = Level 2 GPS Module work 2mins and close 1min, it will periodically work and close.
<b>Power Saving Mode</b>	Set power down mode when the tracker is inactive (stationary) for a period of time. In Power Down mode, GPS stops working and GSM enters sleep mode. The tracker stops sending out messages until it is activated by message, incoming calls, and movement or input changes. = 0, turn off power down mode = [1,255], turn on power down after a specified period of being inactive in minute.
<b>Low Battery Alarm</b>	Low battery alarm will be active once its voltage down to preset value.
<b>Other Functions</b>	Tick and choose following options to active corresponding functions: Call for SMS: Reply SMS after get phone call Google Link Mode: Reply location with Google Link Reject Incoming Call Device Reboot Alarm GPS Blind Alarm LED Off: LED will be off while tracker work External Power Cut Alarm
<b>Read</b>	Read tracker's current setting

File Name:	Parameter Editor	Version	1.1
Project:	IStartek Protocol	Update Date:	2012-5-28
Sub Project:	User Manual	Page:	10 of 10

**Write**

Write configuration into tracker

### 1.3 Tab V: GEO Fence

GPRS | SMS/Calling | Main Setting | **GEO Fence**

**Rectangular GEO Fence**

Foot Left Latitude: 0.000000
Top Right Latitude: 0.000000
Cancel

Foot Left Longitude: 0.000000
Top Right Longitude: 0.000000

**Circular GEO Fence**

Latitude	Longitude	Radius(m)	In	Out
0.000000	0.000000	0	<input type="checkbox"/>	<input type="checkbox"/>

Read Write

Item	Description
<b>Rectangular GEO Fence</b>	Set Rectangular Geo-fence alar: Foot Left Latitude, unit = degree eg.: 23.123456 Foot Left Longitude, unit = degree eg.:114.123456 Top Right Latirude, unit = degree eg.:24.456789 Top Right Longitude, unit = degree eg.:115.456789 Cancel: Cancel alarm Out: Alarm when tracker out of Geo-fence In: Alarm when tracker enter in Geo-fence
<b>Circular GEO Fence</b>	Set Circular Geo-fence Alarm Latitude: Latitude in decimal degrees of the waypoint center Longitude: Radius in meter of the circle Radius: Radius in meter of the circle Out: Alarm when tracker out of Geo-fence In: Alarm when tracker enter in Geo-fence
<b>Read</b>	Read tracker's current setting
<b>Write</b>	Write configuration into tracker

If you have any questions, please send e-mail to [info@istartek.com](mailto:info@istartek.com). We are here to help you.